

DRAWING NUMBER
24-36

DRAWING NUMBER

DRAWING NUMBER

DRAWING NUMBER

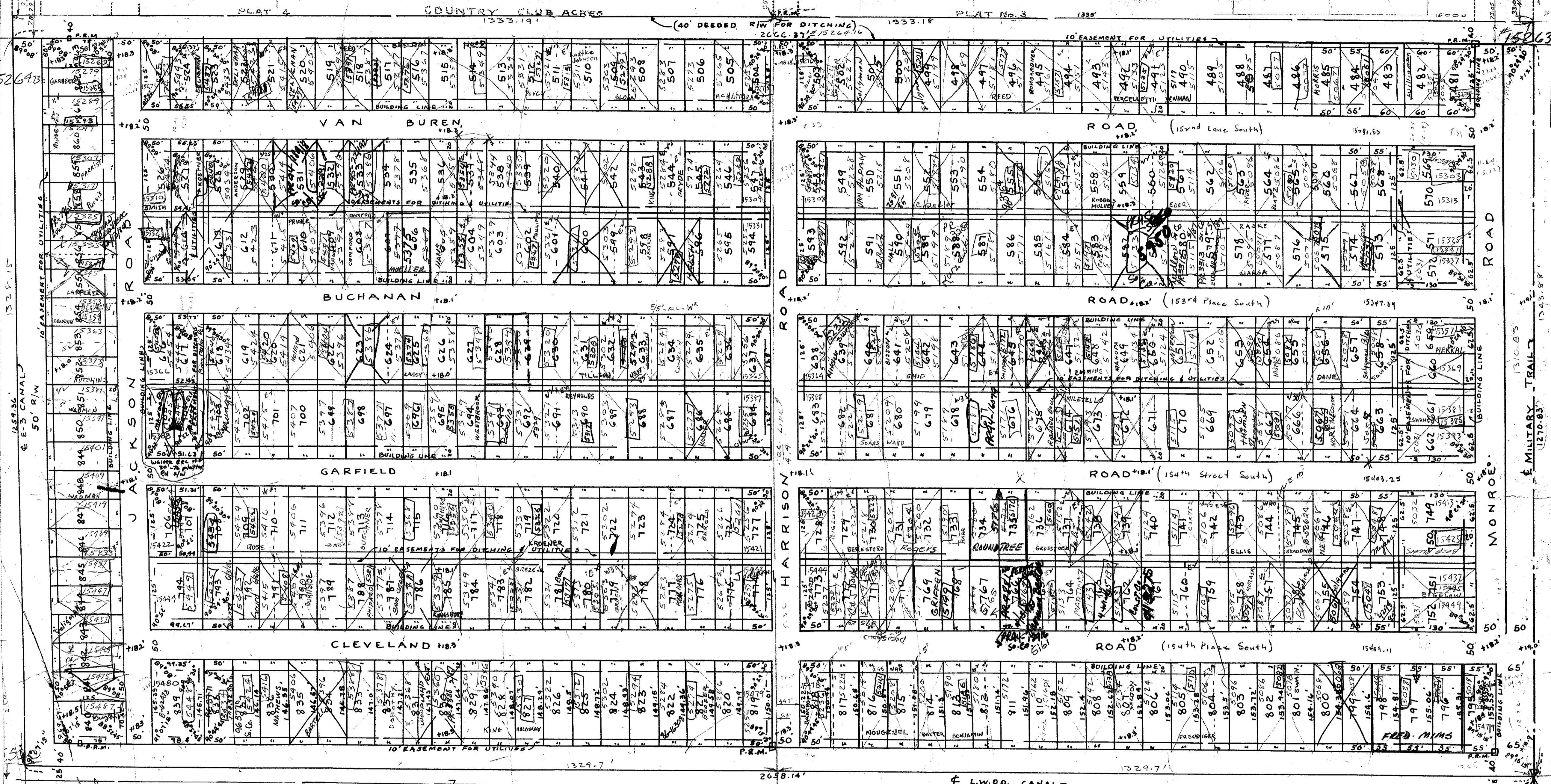
COUNTRY CLUB ACRES

IN N.E. 1/4 OF SEC. 23, TWP. 46 S., RGE 42 E.
PALM BEACH COUNTY, FLORIDA

PLAT No. 5

36

(37)



STATE OF FLORIDA
COUNTY OF PALM BEACH
This Plat was filed the 14th day of April 1953, and duly recorded in Plat Book 24 on page 36
J. W. Borchert
Notary Public

NOTE: Elevations are shown thus (+19.31') and refer to U. S. C. & G. S. Datum.

DESCRIPTION
The Northeast one-quarter of section 23, Twp. 46S-Rge. 42E., less the North 146.94 feet thereof.

DEDICATION OF PLAT OF COUNTRY CLUB ACRES-PLAT No. 5
in Palm Beach County, Florida

State of Florida
County of Dade

Know all men by these presents that Frank J. Wood and Anne L. Wood, his wife, Nan Peach, a widow, and Fred E. Kroker, as trustee under that certain Declaration of Trust dated January 19, 1953, have caused to be surveyed and platted the subdivision as shown hereon according to the surveyor's certificate attached and hereby dedicate to the perpetual use of the public the roads and easements shown hereon and reserve unto themselves the reversion and reversions of same whenever discontinued by law.

I hereby certify that on this 31 day of March, A. D. 1953, before me, the undersigned, personally appeared
FRANK J. WOOD and ANNA L. WOOD, his wife, NAN PEACH, a widow, and FRED E. KROKER, as trustee.

Approved: 13 APR 1953, A. D. 1953
Board of County Commissioners
By: Joe Lital
Chairman
By: John Boyd
County Engineer

COUNTRY CLUB ACRES

Subscribed and Sworn to before me this 28 day of March, A. D. 1953

Laura B. Jenkins
Notary Public

Frank J. Wood (Seal)
Frank J. Wood
Anne L. Wood (Seal)
Anne L. Wood
Nan Peach (Seal)
Nan Peach
Fred E. Kroker (Seal)
Fred E. Kroker, as trustee

1000-400

24-36

23/46/42

Approved: Mar. 31, A. D. 1953
Board of Supervisors of Lake Worth
Drainage District
By: W. J. Johnson
Manager